



# GMT MONTHLY MEMBERSHIP PROGRESS REPORT

Results as of: 3/31/2024

Multiple District 11

LOCATION: MICHIGAN

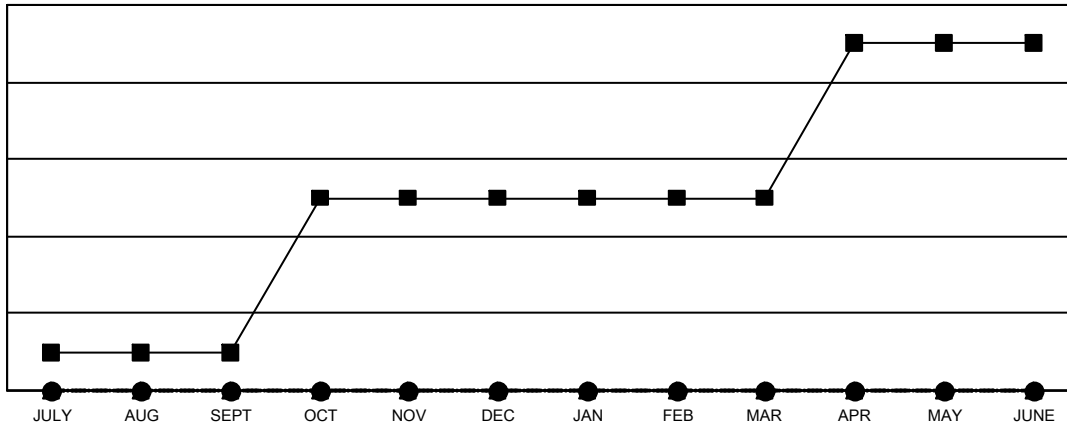
GMT: OPEN

GMT CA 1

Clubs			
RESULTS FOR 2023-2024			
QUARTER	NEW CLUB GOAL	NEW CLUBS	DROPPED CLUBS
JULY/AUG/SEPT	1	0	3
OCT/NOV/DEC	4	0	11
JAN/FEB/MAR	0	0	4
APR/MAY/JUNE	4	0	0

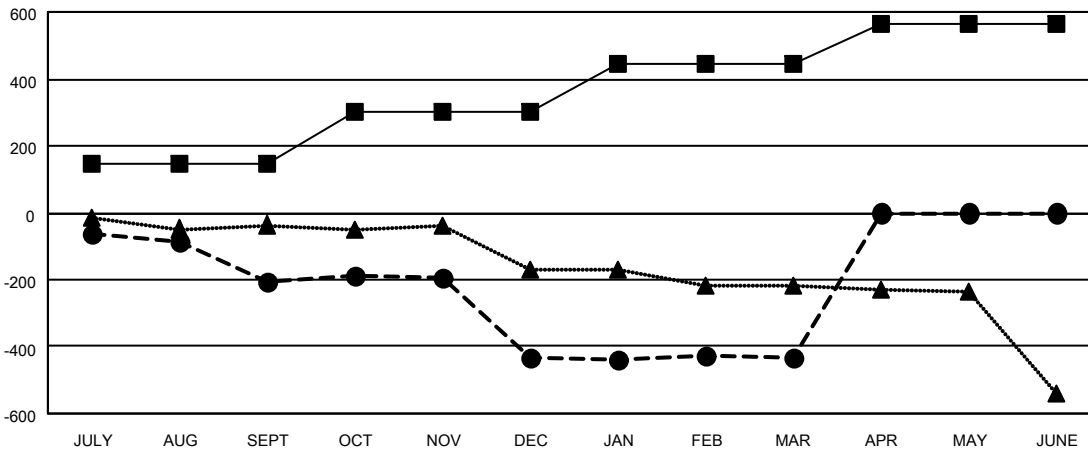
Members			
RESULTS FOR 2023-2024			
QUARTER	MEMBER GROWTH NET GOAL	MEMBER GROWTH ACTUAL	DROPPED MEMBERS ACTUAL (including transfers)
JULY/AUG/SEPT	144	231	406
OCT/NOV/DEC	156	225	431
JAN/FEB/MAR	143	231	180
APR/MAY/JUNE	119	0	0

GOALS AND ACTUAL NEW CLUBS CUMULATIVE



- - CURRENT YEAR GOALS FOR NEW CLUBS
- - CURRENT YEAR ACTUAL NEW CLUBS
- ▲ - LAST YEAR ACTUAL NEW CLUBS

GOALS AND ACTUAL MEMBERS CUMULATIVE



- - MEMBER GROWTH NET GOAL
- - MEMBER GROWTH ACTUAL
- ▲ - LAST YEAR MEMBERSHIP ACTUAL

DROPPED CLUBS: 18	179 CLUBS OF 351 ADDED 1 OR MORE NEW MEMBERS	<b>GENDER DISTRIBUTION</b>
		MALE 5,635 (64.36%)
		FEMALE 3,120 (35.64%)
<b>DROPPED MEMBERS</b>	<a href="#">CLICK HERE FOR CUMULATIVE MEMBERSHIP DATA</a>	TOTAL FAMILY UNIT MEMBERS 1,750
DECEASED 141		FAMILY MEMBERS PAYING HALF DUES 894
CLUB CANCELLED 158		
OTHER 718		
<b>TOTAL 1,017</b>		